

Reaction Flasks and Lids

Wide neck reaction flasks

A range of spherical* flasks from semi-micro to pilot plant scale fitted with large diameter flat flange joints. This design has several advantages over conventional conical jointed flasks.

- ◆ Lids can be easily detached
- ◆ Large stirrers can be accommodated
- ◆ Vessels can be easily cleaned
- ◆ Quick and easy addition and removal of solids or resinous material
- ◆ Flasks and lids using the same size joints are fully interchangeable

	Nom. cap. ml	Flange bore mm	Overall height mm
QFR250F	250	75	90
QFR500F	500	75	115
QFR1LF	1000	100	155
QFR2LF	2000	100	185
QFR3LF	3000	100	210
QFR5LF	5000	100	245
QFR10LF	10000	100	320
QFR20LF	20000	100	400

Multi-socket/flat flange lids

A series of multi-socket lids for use with the Quickfit range of wide neck reaction flasks and culture vessels. They allow introduction of a great variety of standard Quickfit equipment for stirring, temperature measurement, aeration and general distillation procedures. The parallel side neck can be fitted with a multiple adapter so that larger dropping funnels can be used. Lids with a single socket neck are of use where simple extraction, refluxing or mixing only are required.

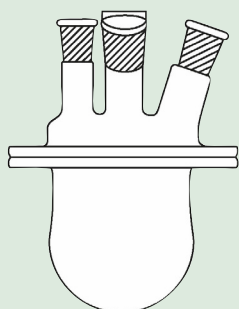
	Flange bore mm	Centre socket	Parallel socket	5°	Side sockets 10°	15°
QMAF1/75	75	19/26	14/23	19/26	19/26	19/26
QDA5/75	75	34/35	—	—	—	—
QMAF2/2	100	19/26	19/26	2 x 19/26	19/26	—
QMAF2/32	100	19/26	19/26	24/29	19/26	—
QMAF2/52	100	19/26	19/26	19/26	19/26	34/35
QMAF3/52	100	24/29	19/26	19/26	19/26	34/35
QDA4/100	100	29/32	—	—	—	—
QMAF4/41	100	29/32	14/23	14/23	14/23	29/32
QDA5/100	100	34/35	—	—	—	—
QMAF5/2	100	34/35	19/26	—	2 x 19/26	—

Clips for flanged flasks and lids

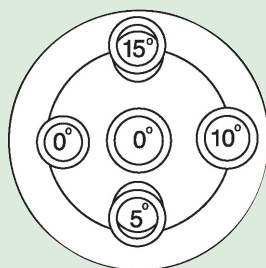
To fit vessels with flange bores as indicated.

- QJC75F** For 75mm bore flanges
- QJC100F** For 100mm bore flanges

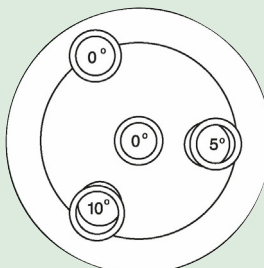
QFR:LF with QMAF: and QJC100F



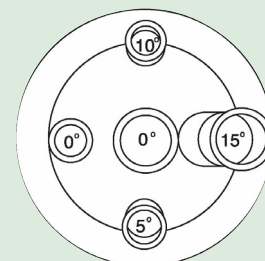
QFR250F



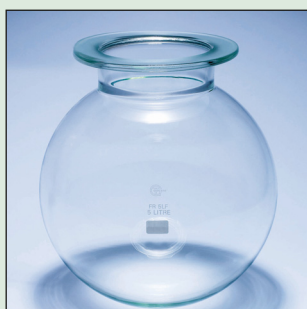
QMAF1/75



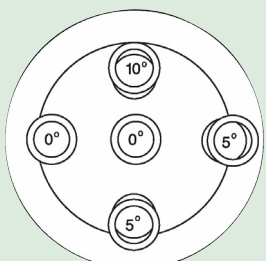
QMAF2/32



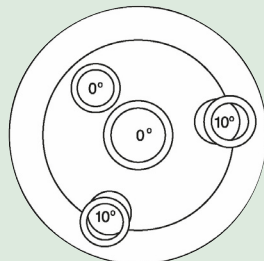
QMAF2/52, QMAF3/52, QMAF4/41



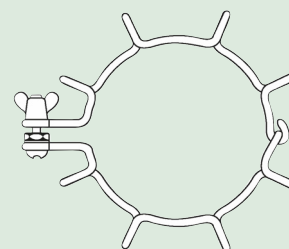
QFR:LF



QMAF2/2



QMAF5/2



QJC:F