

# Pipettors

## Microlitre Transferpette® S



- ◆ Conformity certified
- ◆ Fully autoclavable (at 121°C for 20 minutes)
- ◆ Choice of models:
  - digital variable volumes 0.1 to 10,000µl
  - fixed volume 10 to 1000µl
- ◆ Variable volume models have one-handed adjustment and 4-digit display with prismatic lens window for easy viewing
- ◆ Central pipetting and independent tip ejector buttons are ergonomically positioned for operation in either hand and when wearing gloves

### Microlitre Transferpette® S, variable volume models

Digital reading. Supplied complete with a performance certificate and shelf/rack hanger.

	Ref.	Range µl	Subdiv. µl	A%±	V%	
	<b>PR170-04</b>	D-1	0.1 to 1	0.001	2	1.2
	<b>PR170-07</b>	D-10	0.5 to 10	0.01	1	0.5
	<b>PR170-10</b>	D-20	2 to 20	0.02	0.8	0.4
	<b>PR170-13</b>	D-100	10 to 100	0.1	0.6	0.2
	<b>PR170-16</b>	D-200	20 to 200	0.2	0.6	0.2
	<b>PR170-19</b>	D-1000	100 to 1000	1.0	0.6	0.2
	<b>PR170-22</b>	D-5000	500 to 5000	10.0	0.6	0.2
	<b>PR170-25</b>	D-10000	1000 to 10000	10.0	0.6	0.2

### Conformity Certified

Indicated by the symbol shows that the product has been manufactured by Brand under quality control procedures according to Eichordnung the German Federal Weights and Measures Regulations.

Provided the instrument is used with the recommended accessories and in accordance with the supplied instructions, Brand certify conformity with annex 12 of the Eichordnung.



PR170, PR173 are similar

### Microlitre Transferpette® S, fixed volume models

Digital reading. Supplied complete with a performance certificate and shelf/rack hanger.

	Ref.	Volume µl	A%±	V%	
	<b>PR173-09</b>	F-10	10	1	0.5
	<b>PR173-11</b>	F-20	20	0.8	0.4
	<b>PR173-14</b>	F-25	25	0.8	0.4
	<b>PR173-17</b>	F-50	50	0.8	0.4
	<b>PR173-20</b>	F-100	100	0.6	0.2
	<b>PR173-23</b>	F-200	200	0.6	0.2
	<b>PR173-26</b>	F-500	500	0.6	0.2
	<b>PR173-29</b>	F-1000	1000	0.6	0.2

A% = Accuracy, V% = Reproducibility.

Figures quoted are based on the maximum volume and distilled water at 20%.

### Accessory Racks

**PR173-95** Bench mounting for up to 6 x PR170/173 models only

**PR173-98** Shelf/rack hanger for 1 x PR170/173 models only

### Disposable Pipette Tips, Brand

High quality polypropylene tips which are Conformity Certified when used with Transferpette® pipettors. Cadmium free. Also suitable for use with Eppendorf and Gilson pipettors.

### TipBox Set

Supplied as a steam sterilisable plastic box with hinged transparent cover containing a filled tip rack, plus additional tip racks as indicated.

### TipRacks

Refill packs for TipBox Sets, comprising racks for tips to be dropped into empty TipBoxes as required.

### Loose Packs

Supplied loose in a bag or carton in the quantities indicated.

### Nano-Cap™, for volumes 0.1 to 20µl

**PR140-05** TipBox set, 5 racks x 96 tips

**PR140-08** TipRacks for PR140-05, 10 racks x 96 tips

**PR140-10** Loose pack of 2000 tips

### Crystal, for volumes 0.5 to 20µl

**PR140-12** TipBox set, 5 racks x 96 tips

**PR140-14** TipRacks for PR140-12, 10 racks x 96 tips

**PR140-16** Loose pack of 2000 tips

### Yellow, for volumes 2 to 200µl

**PR140-24** TipBox set, 5 racks x 96 tips

**PR140-26** TipRacks for PR140-24, 10 racks x 96 tips

**PR140-28** Loose pack of 1000 tips

### Natural\*, for volumes 50 to 1000µl

**PR140-45** TipBox set, 5 racks x 96 tips

**PR140-48** TipRacks for PR140-45, 10 racks x 96 tips

**PR140-52** Loose pack of 1000 tips

\*Except for PR140-52 which are blue coloured tips.

### Natural, for volumes 500 to 5000µl

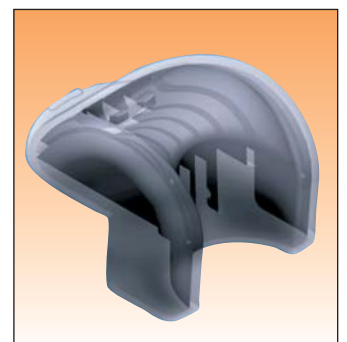
**PR140-80** Loose pack of 200 tips

### Natural, for volumes 1000 to 10000µl

**PR140-95** Loose pack of 200 tips



PR173-95 in use



PR173-98