

Heating

HM-200 Series Electromantles

Cole-Parmer®

an antylia scientific company

- ◆ Capacities from 100ml up to 5 litres
- ◆ Polypropylene outer case
- ◆ Replaceable flexible heater cartridge
- ◆ One or more support rod clamps according to mantle capacity
- ◆ Maximum element temperature 450°C
- ◆ Safety earth (ground) screen for operator safety
- ◆ Integral energy regulator control
- ◆ **Flexible heater cartridge.** The heating elements are suspended in a thermal insulating former making for quick and simple replacement
- ◆ **Safety screen.** This earth (ground) screen is performed in stainless steel and fitted above the heating element. It is earthed (grounded) directly to the supply cable
- ◆ **Standard fitments.** All models incorporate the flexible heater cartridge plus a 'power' on indicator lamp, earth screen and internal fuse. Capacities 50ml to 1 litre have one support clamp and capacities 2 to 5 litre have three clamps. All accept up to 12.7mm diameter rods

Controlled Models

Generally as the standard models but with integral, arbitrary scaled, solid state controller. For 230V 50/60Hz a.c. single phase supplies. Formerly Electrothermal EM-series.

	Ref. HM-	Cap. ml	Rating W
Solid state controller model with earthed screen			
HE215-20	200-100	100	60
HE215-25	200-250	250	150
HE215-30	200-500	500	200
HE215-40	200-1000	1000	300
HE215-45	200-2000	2000	500
HE215-50	200-3000	3000	500
HE215-60	200-5000	5000	800

Cartridges

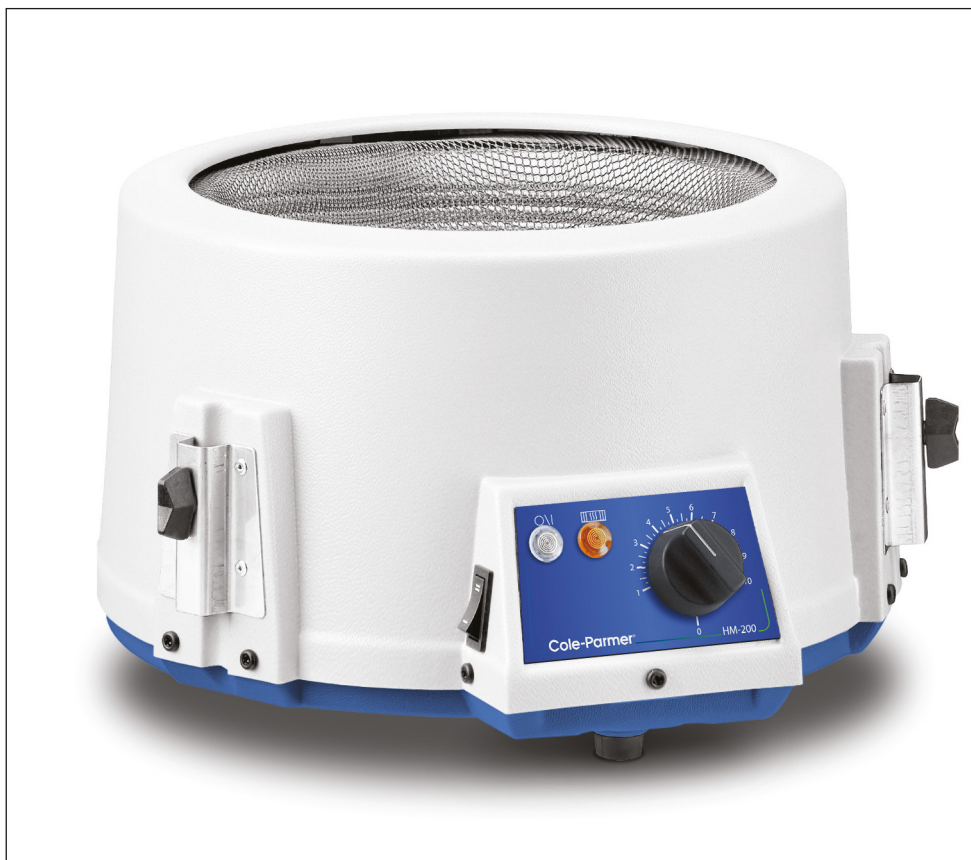
Replacements for all HM-200 Series Mantles. For 230V 50/60Hz a.c. single phase supplies.

	For mantle ml
HE220-15	250
HE220-20	500
HE220-25	1000
HE220-45	2000
HE220-60	5000

Support rods – see SL400-series.

Digital temperature controller

Retort rod mounting. With accessory probes to control to +800°C – for details see EE500-75 in the Electrical section.



HE215