

# Bottles, Plastic

## Plastic with Screwcap continued

### Bottles, polyethylene

White HDPE. With sloping shoulder and leakproof tamper-evident PP cap with PTFE cap seal. The 2500ml size has a carrying handle. Supplied in packs of 4.

	Cap. ml	Neck i.d. mm
BR642-41	500	29
BR642-51	1000	29
BR642-95	2500	29

### Bottles, polypropylene, leakproof

High quality, sturdy, translucent bottles designed for laboratory use at an economical price. Narrow mouth with sloping shoulders and leakproof cap. Can be autoclaved to 132°C. Supplied in packs as indicated.

	Cap. ml	Pack qty.
BR644-08	10	100
BR644-12	20	100
BR644-17	30	100
BR644-24	50	1
BR644-30	100	1
BR644-34	250	50
BR644-42	500	1
BR644-52	1000	1
BR644-62	2000	1

PTFE bottles are available – details on request.

### Bottles, Azlon polypropylene

Narrow mouth with leakproof cap. Translucent and can be autoclaved to 121°C. Supplied in packs as indicated.

	Ref. BNP-	Cap. ml	Pack qty.
BR650-18	0030PN	30	10
BR650-24	0060PN	60	10
BR650-30	0100PN	100	10
BR650-32	0125PN	125	10
BR650-36	0150PN	150	10
BR650-44	0250P	250	10
BR650-52	0500P	500	10
BR650-82	1000P	1000	5
BR650-92	2000P	2000	5

### Bottles, Azlon polycarbonate.

Narrow mouth. Transparent, shatterproof polycarbonate with approximate graduations and leakproof polypropylene cap. Suitable as an alternative to glass for biological media, aqueous solutions and reagent storage. Square shape ensures economic use of storage space. Can be autoclaved at 121°C, up to 10 times. Supplied in packs as indicated.

	Cap. ml	H x W x D mm	Neck i.d. mm	Pack qty.
BR662-43	250	139 x 59 x 59	28	24
BR662-52	500	172 x 73 x 73	28	12
BR662-82	1000	213 x 92 x 92	28	12
BR662-92	2000	266 x 115 x 115	40	6

## Plastic, Tablet/Vials

### Bottles, tablet. Without Cap.

Amber polystyrene. Supplied in packs as indicated.

	Cap. ml	Neck	Pack qty.
BR670-12	16	R3/20	200
BR670-15	25	R3/22	200
BR670-18	32	R3/22	200
BR670-19	48	R3/24	200
BR670-24	66	R3/28	100
BR670-29	90	R3/28	100
BR670-31	112	R3/28	100
BR670-32	125	R3/28	100

Caps – see BR220 etc.

### Vials

Amber polystyrene with polyethylene push-on closure. Supplied in packs as indicated.

	Cap. ml	Pack qty.
BR680-10	15	200
BR680-17	30	200
BR680-18	45	200
BR680-23	60	100
BR680-30	120	50

### Important Warning Sterilising Bottles

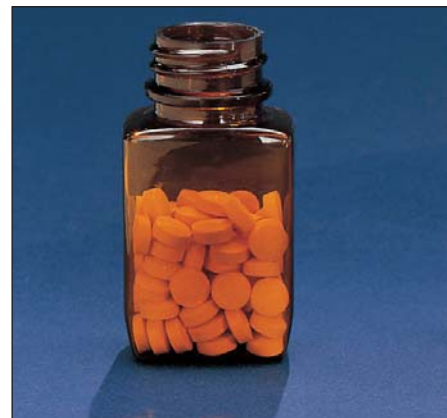
Some bottles where indicated can be sterilised by autoclaving. However BEFORE AUTOCLAVING (or sterilising by gas or dry heat) the cap or closure must either be removed or just set on top of the container **WITHOUT ENGAGING THE THREAD.**



BR642



BR650



BR670



BR644



BR662



BR680