

Barometers

Analogue

Analogue Barometer/Weather station

Indoor use. Bench or wall-mounting, with three, 45mm diameter dials. From top to bottom these indicate humidity (scaled 0 to 100% RH), atmospheric pressure (scaled 970 to 1050hPa x 1hPa) and temperature (scaled -20 to +60°C), respectively. Overall 55 x 33 x 165mm W x D x H. Weight 116g.

BF105-40 Analogue barometer/
weather station

Analogue Barometer/Weather station

Outdoor use. Wall-mounting, aluminium/glass housing with rain shield. 3-dial white face with main dial indicating atmospheric pressure from 960 to 1040hPa x 1hPa and smaller subsidiary dials indicating temperature from -40 to +60°C x 1°C and humidity from 0 to 100%RH x 1%RH, respectively. Overall 145 x 70 x 215mm W x D x H. Weight 500g.

BF105-60 Analogue barometer/
weather station

Hygrometers – see *HY160 to HY650-series*.

NOTE

Atmospheric pressure is now commonly measured in the metric unit of hPa (hectoPascals). 1hPa = 1mb.



BF105-40



BF105-60

Aneroid

Aneroid Barometer

Dual scaled 940 to 1060hPa x 1hPa and 71 to 80cm x 0.1cm. Brass finish case 100mm diameter. With manually adjustable pointer, to aid pressure trend indication, and hanging ring.

BF108-15 960 to 1060hPa

Anemometer, vane, compact

Compact hand-held, vane-type anemometer and thermometer with rugged ABS housing and large, clear, backlit LCD readout.

Ranges:-

Wind speed: 0.4 to 30m/s (alternative ranges: mph, knots, km/h)

Temperature: -30 to +60°C (alternative range: -22 to 140°F)

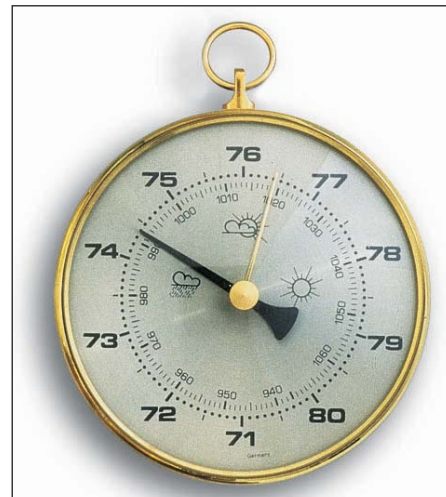
Precision: ±3%. Other functions include maximum and minimum values and battery status readout. Overall 175 x 52 x 35mm L x W x D. Weight 115g. Supplied with battery.

AN450-25 Vane anemometer, compact

BL610-25 Spare battery, 9V



BF107-45



BF108-15

Digital

Digital Barometer/Weather station

With multiline LCD display indicating temperature (indoor, and outdoor using radio communication sensor supplied) with Max/Min facility, indoor humidity, barometric pressure with graphic icon indication of next 12 hours weather, pressure development profile for the previous 12 hours shown in a bar chart format, storm warning indicator, moon phase graphic, clock with time zone adjustment, date, month and year calendar. Wall or desk mounting. Overall 158 x 119 x 26mm H x W x D (display unit), 104 x 40 x 26mm (remote sensor). Supplied with batteries.

◆ Ranges

- 800 to 1100hPa x 1hPa
- -50 to +70°C outdoor
- -10 to +50°C indoor
- 1 to 99%RH

BF107-45 Digital Barometer/
Weather station

Accessories

BL610-08 Battery, AAA, 1.5V
(3 required for display module, 2 required for sensor)



AN450-25