

Adapters

Plastic, Micro

Micro tubing adapters. Natural polypropylene[†]. Precision moulded. For low pressure applications. Supplied in packs of 100.

	Limb size, to fit tubing i.d.
Straight	
AD062-05	1.6mm
AD062-10	2.4mm
AD062-15	3.2mm
AD062-20	4.0mm
AD062-25	4.8mm
Elbow, 90° bend	
AD064-05	1.6mm
AD064-10	2.4mm
AD064-15	3.2mm
AD064-20	4.0mm
AD064-25	4.8mm
T-shape	
AD066-05	1.6mm
AD066-10	2.4mm
AD066-15	3.2mm
AD066-20	4.0mm
AD066-25	4.8mm
Y-shape	
AD068-05	1.6mm
AD068-10	2.4mm
AD068-15	3.2mm
AD068-20	4.0mm
AD068-25	4.8mm
X-shape, 90° cross	
AD069-05	1.6mm
AD069-10	2.4mm
AD069-15	3.2mm

[†]Other materials, such as coloured nylon, clear or radiation-stable polycarbonate, or Kynar are available subject to minimum quantity requirements. Reduction/expansion adapters are also available - *details on request*.

Luer micro tubing connectors. Natural polypropylene[†]. Precision moulded. Allow secure, easy connection and disconnection of microtubing with different diameters. For low pressure applications. Supplied in packs of 100.

	Luer type*	Barb for tubing i.d.
AD085-05	Male	1.6mm
AD085-10	Male	2.4mm
AD085-15	Male	3.2mm
AD085-20	Male	4.0mm
AD085-25	Male	4.8mm
AD085-80	Female Luer plug closure with thread	
AD087-05	Female	1.6mm
AD087-10	Female	2.4mm
AD087-15	Female	3.2mm
AD087-20	Female	4.0mm
AD087-25	Female	4.8mm
AD087-80	Male Luer plug closure with locking collar	

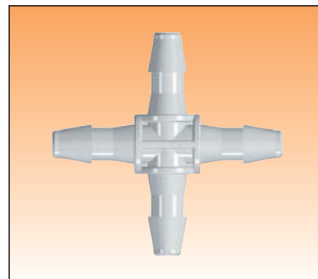
*With thread (female) or locking collar (Male).

Adapters, Luer

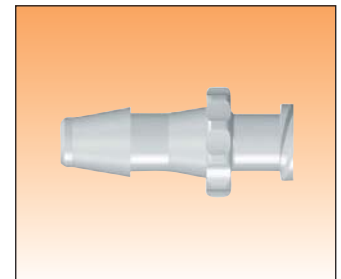
For low pressure applications. Straight pattern. Non-sterile. Natural nylon. With male luer-lock and 6mm o.d. ferrule. Supplied in packs of 100.

AD095-11 Adapters

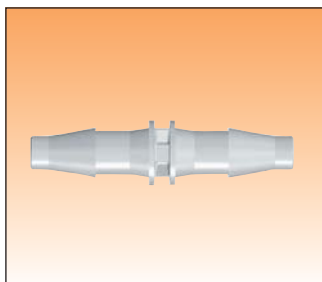
[†]Other materials, such as coloured nylon, clear or radiation-stable polycarbonate, or Kynar are available subject to minimum quantity requirements. Reduction/expansion adapters are also available - *details on request*.



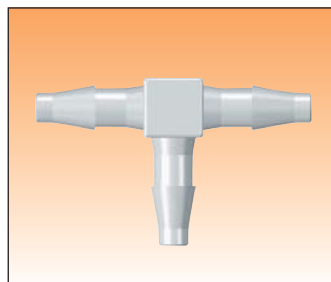
AD069



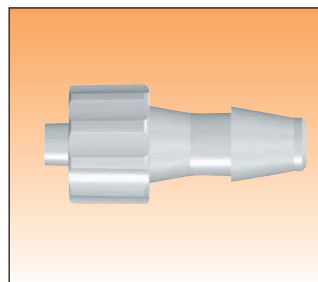
AD087-05 to AD087-25



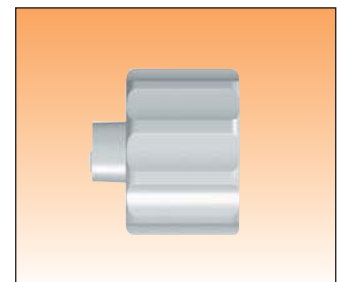
AD062



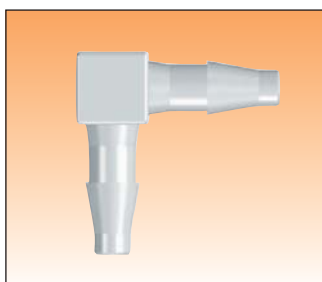
AD066



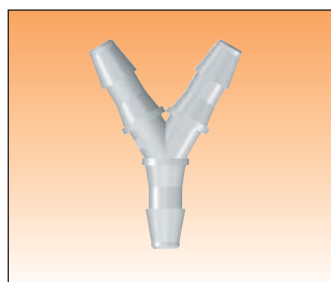
AD085-05 to AD085-25



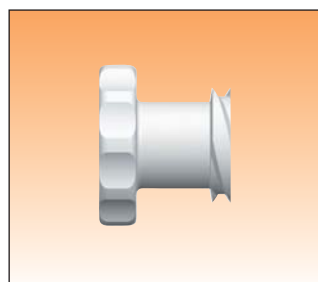
AD087-80



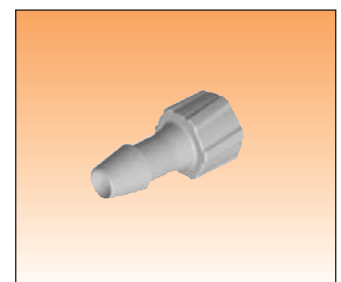
AD064



AD068



AD085-80



AD095-09